

# MOWER COUNTY RESOURCE GUIDE

## LISAT LOVLISTA DE RECURSOS DEL CONDADO DE MOWER

### LAW ENFORCEMENT/MEDICAL EMERGENCY/POLICIA/ EMERGENCIA MEDICA

### HEALTH SERVICES/ SERVICIOS SIN EMERGENCIA

# Emergency Call 911

Austin Police Department Non-Emergency  
437-9400

Mower County Sheriff 437-9400

Truancy Officer 437-9454

Current Jail Inmate List

[www.co.mower.us/sheriff.htm](http://www.co.mower.us/sheriff.htm)

### CRISIS INTERVENTION/INTERVENCION EN CRISIS

Crime Victims Resource Center 437-6680

Crisis Response 844-274-7472

### CHILD ABUSE PREVENTION/PREVENCIÓN DE MALTRARO INFANTIL

Child Protection 437-9700

Human Trafficking Hotline 1-888-373-7888

Mayo Clinic Health System 433- 7351

Nurse Care Line 888- 609- 4065

Patient Online Services

Support Line 877- 858- 0398

Other Behavioral Services 433- 7389

Psychiatric Service Unit 433- 7351

Patient Education 434- 1753

Covid- 19 Nurse Helpline 507- 293- 9525

Health Access Minnesota 507- 589- 8136

QPP Employee Clinic 434- 6299

Hormel Employee Clinic 434- 6882

Mower County Public Health 434- 9770

WIC- Mower County 437- 9799

Adams Health Care Center 507- 582- 3263

Express Clinic at Hy Vee in Austin\_\_ WALK- IN

Minnesota Care 1- 800- 657- 3672

Mower County Public Health 437- 9701

Sacred Heart Home Health Care 433-1808

Intrepid USA Health Care Service 433- 4700 MN

Children w/ Special Health Needs

1- 800- 728- 5420

United Home Health Care Choice

1- 888- 460- 1815

AIDS- HIV TESTING/ EXAMENES DESIDA- VIH

AIDS National Hotline 1- 800- 342- AIDS

AIDS Minnesota Hotline 1- 800- 248- AIDS

### TOLL-FREE HOTLINE NUMBERS/NUMEROS DE LINEA TELEFONICA GRATUITA

SEX TRAFFICKING HOTLINE 1-888-373-7888

SAFE HARBOR (SEXUALLY EXPLOITED YOUTH) 1-866-223-1111

RUNAWAYS (OPERATION PEACE OF MIND)1-800-231-6946

EPILEPSY FOUNDATION OF MN 1-800-332-1000

MADD(MOTHERS AGAINST DRUNK DRIVERS)1-800-487-6233

RUNAWAYS/SAFE CHOICES 1-800-621-4000

STUTTERING HOTLINE 1-800-221-2483 MN

CRIME VICTIMS 1-800-247-0390 24-HOUR

CRISIS LINE 1-800-422-1295 BATTERED

WOMEN 1-800-799-7233

PACER 1-800-537-2237

PARENT WARMLINE

\$0.50

\$0.50

\$0.50

Send resource list additions or changes to [programs@prc-austinmn.org](mailto:programs@prc-austinmn.org)

COUNSELING/MENTAL HEALTH /  
CONSEJERIA/SALUD MENTAL

MAYO Clinic	433- 7351
Catholic Charities	433- 3062
Cedar River Counseling Srvcs	433- 6482
Cedar House	437- 9152
Crisis Response	1- 844- 274- 7472
Family Focus	434- 3586
Gerard Community Mental Health Services Therapy, Diagnostic, Assessment and Psychological Testing	434- 4366
Kevin Anderson Lic. Psychologist/EMDR Therapy	440- 0134
Lutheran Social Svcs.	1- 800- 582- 5260
Mayo Clinic Social Services Psychiatry/ Psychology Assoc.- So MN	437- 7351 433- 5191
Independent Management Services (IMS)/ ARMHS therapy, diagnostic assessment & psychological test	437- 6389
Dr Moran Professional Corp	438- 2010
Veteran Service Office	
Mower County	434- 2712
Quality Case Mgmt, Inc.	437- 9085
Quality Community Svcs. Inc	437- 9085
New Horizons Adoption Agency	800- 314- 3370
Wellness In The Woods	844- 739- 6369
Fernbrook	507-589-4535

EDUCATION/EDUCACION

Austin Public Schools District Office	460-1900
Alt School/Area Learning Ctr	460-1805
Austin Community Education	460-1706
Austin Adult Learning	460-1707
English Language Learning	460-1707
GED & Transition to College	440-8701
Austin ECFE	460-1709
ECSE(Early Childhood Special Ed.)	460-1705
Blooming Prairie Public Schools	583-4427
Grand Meadow Admin & ECFE	754-5310
Hayfield-Brownsdale ECFE	477-3236
Hayfield-Brownsdale Public Schools	477-3236
LeRoy-Ostrander Admin	324-5743
LeRoy-Ostrander ECFE	324-5741
Lyle Schools Administration	582-3568
Riverland CC Austin	433-0600
	1-800-247-5039
Headstart Program (SEMCAC)	433-5889
PACER	1-800-537-2237
Autism Resource Specialist	433-4243
Univ. of Minnesota Ext, Mower Co.	437-9552
Univ. of Minnesota Extension, Mower Co. for SNAP –Ed (Nutrition)	434-2653 ext 653



LIBRARIES/BIBLIOTECAS

Austin Public Library	433- 2391
Brownsdale Public Library	567- 2177
Grand Meadow Public Library	754- 5859
Hayfield Community Library	477- 2455
LeRoy Public Library	324- 5641
Lyle Community Library	325- 2369
MN Library for the Blind/ Talking Books	1- 800- 722- 0550



## PARENTING EDUCATION/EDUCACION DE PADRES

### Parenting Resource Center

Parents Forever Divorce Education	437-8330
Parent WARMLINE	440-4164
Parent Education	437-8330

University of Minnesota Extension, Mower Co.	437-9552
ECFE (Early Childhood Family Ed.)	460-1709
HelpMeGrowMN	1-866-693-4769
Austin Aspires Parent to Parent	437-0920



## YOUTH CHILDREN/RECREATION/ RECREACION JUVENIL

Austin Community Education	433-0971
Austin Park & Recreation Program	433-1881
Boy Scouts	387-3123
Girl Scouts River Valley	1-800-845-0787
Austin Community Recreation Center	433-1804

## SUPPORT GROUPS/GRUPOS DE APOYO

Crimes Victims Resource Center	437-6608
Mother of Children with Handicaps	325-4742
Adult Children of Alcoholics	437-3797
Circle of Parents	377-7665
Circle of Hope	438-2034
La Leche League of Southeast MN	456-8238
Celebrate Recovery	433-7008
MOPS-Austin (Mom's Group) on FB or Call	507-219-2291
Recovery Is Happening	507-218-4773
Nexus Gerard Family Healing	433-1845
Austin Manor	433-5569
Austin Alano Groups	433-9868
The Bridge	434-9334
Support With Love LGBTQ+	440-4164 or 437-8330
Wellness In The Woods	844-739-6369



## CHEMICAL DEPENDENCY/DEPENDECIA DE SUSTANCIAS QUIMICAS

Alcoholics Anonymous (AA)	433-9868
Narcotics Anonymous	433-9868
Mayo Clinic Health System Fountain Center Austin	434-1890
Mayo Clinic Health System Tobacco Cessation	434-1429
Circle of Hope Support Group	438-2034



## FOOD/COMIDA

Mower County DHS (vouchers)	437-9701
Ruby's Pantry Grace Lutheran Austin 3rd	
Thursdays of each month	433-3445
Cornerstone Church Austin	433-7008
Lyle Our Savior's Lutheran Church	325-4684
LeRoy Area Ministerial Assoc	324-5722
Racine	507-378-4801
Mower County Senior Center	507-433-2370
WIC (Women, Infant & Children)	437-9799
Salvation Army	437-4566
Our Saviors Lutheran-Lyle	325-4684
American Red Cross—Disaster	1-844-878-9933
NAPS	1-877-500-8699
Little Cedar Food Shelf (for Southland Families)	582-3185
SEMCAC Senior Dining Austin	459-9270
<u>SEMCAC Meals on Wheels:</u>	
Austin Meals on Wheels	433-3120
Grand Meadow/Dexter/Lyle	754-5744
Adams	582-3185S



## HOUSING/VIVIENDA

Austin HRA	433-1866
Mower Co HRA	434-5556
American Red Cross (disaster)	1-844-878-9933
Salvation Army(emergency)	437-4566
SEMCAC (emergency)	433-5889
Housing Equality Law Project	1-866-292-0080
Rochester Women's Shelter	507-285-1010
Quality Case Management, Inc.	437-9085
Crisis Resource Center Owatonna	1-800-451-1202
Dorothy Day Shelter (homeless)	507-282-5172
Habitat for Humanity-Freeborn/Mower	433-1349
Independent Management Services	437-6389
Mower County DHS (vouchers)	437-9701



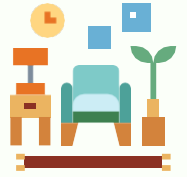
## CLOTHING/ROPA

Birthright	437-2373
Rachel's Hope	437-7595
Parenting Resource Center	437-8330
Salvation Army	433-7203



## USED CLOTHING OR FURNITURE FOR SALE/VENTA DE ROPA USADA

Twice is Nice	433-5353
Salvation Army	437-4566
A to Z Treasures	433-0090



## PERSONAL CARE ITEMS/ARTICULOS DE CUIDADO

Twice is Nice	433-5353
Salvation Army	437-4566
A to Z Treasures	433-0090
Parenting Resource Center	437-8330



## ENERGY ASSISTANCE/ASISTENCIA DE ENERGIA

SEMCAC	433-5889
--------	----------



## TRANSPORTATION/TRASPORTACION

SMART	1-855-762-7821
AB Taxi	434-9689
Quick Ride Taxi Service	433-9055



## DRIVER'S LICENSE/LICENCIAS DE CONDUCIR

DEPT OF MOTOR VEHICLES	434-2675
------------------------	----------

## FINANCIAL CONSULTING/CONSULTORIA FINANCIERA

Independent Management Services	437-6389
---------------------------------	----------



## EMPLOYMENT/EMPLEO & CAREER COUNSELING/CONSEJERIA EN CARRERAS

Workforce Development	433-0555
CLUES	355-8575
Welcome Center	434-2863
CHOICES	507-280-5510
Cedar Valley Services	433-2303
Riverland Community College	433-0600



## CHILDCARE/ GUARDERIAS

Child Care Resource and Referral 1-800-462-1660  
Helping Homes 507-438-1270  
(emergency/temporary care)

Mower County Public Health –Daycare Providers list  
website: [www.mowercountyhhs.com](http://www.mowercountyhhs.com)



Mower County Childcare Assistance 437-9701  
<https://www.mowercountyhhs.com/child-care-assistance>

Austin Aspires – Daycare and Preschool  
Opening list (always updated) – visit 437-6389  
[www.austinaspires.org](http://www.austinaspires.org)



## BIRTH CONTROL/ANTICONCEPTIVOS

MN Family Planning/STI Hotline 1-800-783-2287  
Mower CountyCommunityHealth 437-9701

## PREGNANCY/EMBARAZO

Mower County Community Health 437-9701  
Rachel's Hope Support & Council 437-7595  
Catholic Charity Information Line 1-800-222-5859  
Pregnancy Hot Line 1-800-848-5683  
Mayo Clinic Health System 433-7351  
New Horizon Adoption Agency 1-800-314-3370



## LOCAL MOM GROUPS

Mother of Children with Handicaps 325-4742  
La Leche League of Southeast MN 456-8238  
MOPS-Austin (Mom's Group) on FB or Call 507-219-2291  
Facebook Pages  
Mommies  
Parent-to-Parent



## HUMAN SERVICES/SERVICIOS HUMANOS

Independent Management Service	437-6389
Lutheran Social Services of MN	1-800-582-5260
Welcome Center	434-2863
Mower County DHS	437-9701
MN 211	2-1-1
Cedar Valley Services	433-2303
Health Access Minnesota	589-8136
New Horizons Adoption Agency	800-314-3370
Austin Human Rights Commission	437-9940
IMAA Intercultural Mutual Asst Assoc.	507-273-2280 or 507-273-4230



## DISABILITY SERVICES/SERVICIOS DE DISCAPACIDAD

LIFE Mower County	433-8994
Cedar Branch DAC Adams	582-7726
Cedar Valley Services	433-2303
Cedar House, Inc.	437-9152
Division of Rehabilitation	433-0570
Epilepsy (MinCepCare PA)	1-612-525-2400
March of Dimes/SE MN	1-507-282-0649
MN State Council on Disabilities	1-800-562-9747
Mower Council for Handicapped	433-9609
SE Center for Independent Living (Rochester)	507-285-1815
REM Woodvale	433-7301
SEMCIL	1-888-460-1815
MN Children w/Special Health Needs	1-800-728-5420
Independent Management Services	437-6389
Quality Case Management, Inc.	437-9085
Quality Community Services, Inc.	437-9085



## FAMILY VISITATION & EXCHANGE/VISITAS FAMILIARARES Y INTERCAMBIOS

Seibel Visitation Center 434-7550

## FOSTER CARE/ CUIDADO ADOPTIVO

Mower County DHS 437-9700

## LEGAL SERVICES/SERVICIOS LEGALES

SE Minnesota Reg. Legal Services (Intake)	1-888-575-2954
Minnesota Family Law Project	1-866-292-0080
Immigrant Law Center of Minnesota	1-651-641-1011



## REFUGEE PANDEMIC RESOURCE

Minnesota recently launched a new hotline specifically for refugees and immigrants to ensure they have access to accurate, timely information about the COVID-19 pandemic.

Refugees and other immigrants can call 651-318-0989 from 9 a.m. to 5 p.m. Monday through Friday, for information on:

COVID-19 testing locations

Food support

Health care

Mental health resources

Housing and rental assistance

COVID-19 case investigation and contact tracing.



The hotline has staff that can speak Amharic, Anuak, Arabic, French, Hindi, Karen, Lingala, Luganda, Mashi, Oromo, Somali, Spanish and Swahili. Language line help is available for any other language.

<https://mn.gov/dhs/people-we-serve/seniors/services/refugee-assistance/>